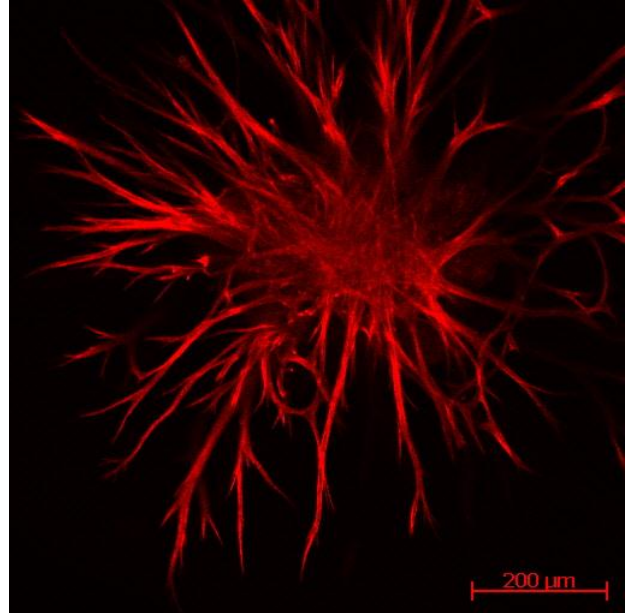
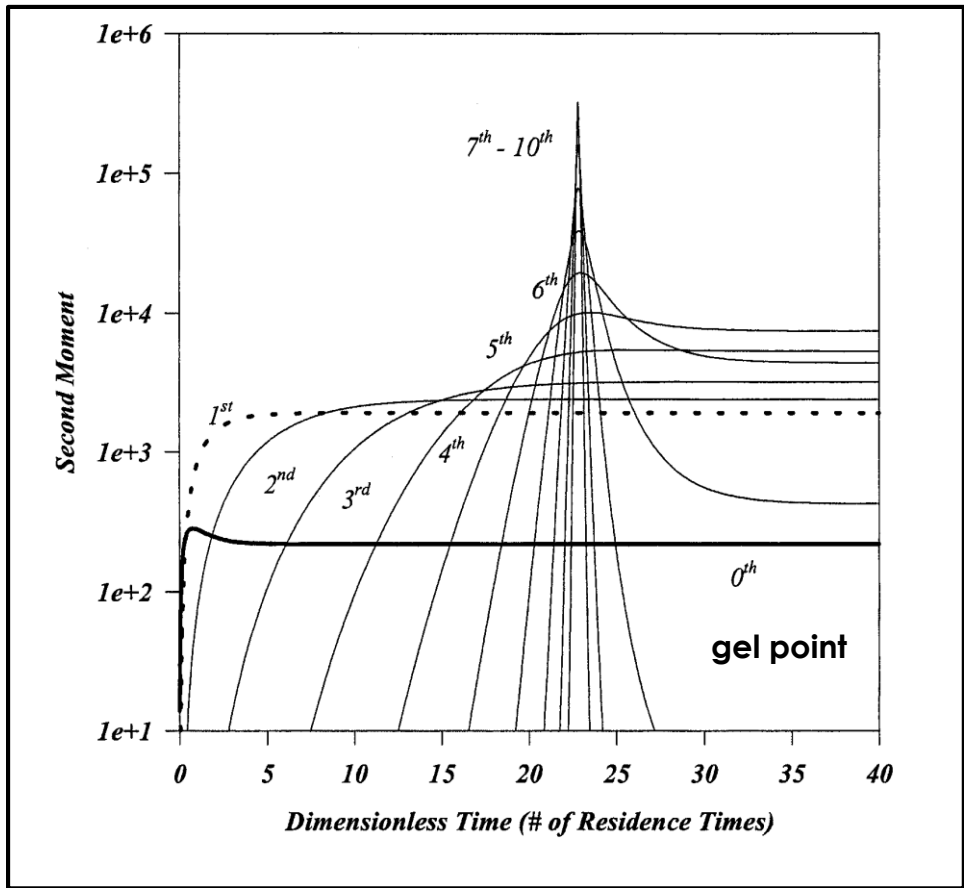


Gradients of RGD, MMP-sensitive domains, and elastic modulus result in 3D directed fibroblast cell behavior within PEG hydrogels formed via Perfusion Based Frontal Photopolymerization (PBFP)



Increased proteolytic degradation in PEG Hydrogels with independently tuned degradation and mechanical properties enhances 3D cell invasion



Dynamic simulation of the evolution of polymer generations en route to gelation.